



SAN DIEGO VENUE PORTFOLIO



last updated - 10/16/24

THE SAN DIEGO SCENE

Behind the Scenes Catering & Events is committed to delivering unforgettable experiences for the entertainment industry, corporate groups, and private clients. Our dedication shines through in our unparalleled customer service, innovative appeal, exquisite cuisine, and superior catering quality.

With over 30 years of experience in San Diego, we have established wonderful partnerships with some of the region's finest venues. We invite you to explore the following pages, showcasing venues we are the exclusive or preferred suppliers for. We'd love to offer our expertise to help ensure the success of your upcoming events at these locations.





VENUE INDEX

PREFERRED & EXCLUSIVE VENUES

Birch Aquarium	4
Building 177	5
Coronado Community Center	6
Deck 655	7
Found Studios	8
Julep	9
La Jolla Bridge Club	10
La Jolla Woman's Club	11
Liberty Station Conference Center	12
Luce Kettner	13
Luce Loft	14
Martin Johnson House	15
MCAS Miramar	16
New Central Library	17
Orli La Jolla	18
Rancho Guejito	19
Robert Paine Scripps Forum	20
The Conrad	21
The Soap Factory	22
UC San Diego Park & Market	23
Ultimate Skybox	24

ADDITIONAL VENUES WE ARE PROUD TO PARTNER WITH	25
---	----



BIRCH AQUARIUM

2300 Expedition Way, La Jolla, CA 92037



VENUE INFORMATION

Nestled on a cliff overlooking breathtaking ocean views, Birch Aquarium at Scripps offers a unique and captivating setting for any occasion. The facility boasts over 60 diverse marine habitats, including a two-story Giant Kelp Tank that immerses guests in the underwater world. Hosting an event at the Birch Aquarium not only guarantees unforgettable experiences, but contributes directly to ocean conservation efforts by supporting exhibits, animal welfare, and educational initiatives.

LOCATION	CAPACITY	BTS BAR SERVICES
La Jolla	1,500 Reception 670 Seated	No

BUILDING 177

2875 Dewey Rd, San Diego, CA 92106



VENUE INFORMATION

Situated in the vibrant and historic Liberty Station in San Diego, formally the Naval Training Center Library, Building 177 has been reimagined into a contemporary venue that seamlessly blends a blank canvas with modern design elements. With its grand vaulted ceilings, exposed beams, and over 7,000 square feet of flexible space, Building 177 offers a versatile setting for a variety of events. The venue's large black windows, clean lines, and black-and-white color scheme create a sleek and stylish atmosphere, making it an ideal choice for those seeking a dreamy and modern event space.

LOCATION	CAPACITY	BTS BAR SERVICES
Liberty Station	750 Reception 400 Seated	No

CORONADO COMMUNITY CENTER

1845 Strand Way, Coronado, CA 92118



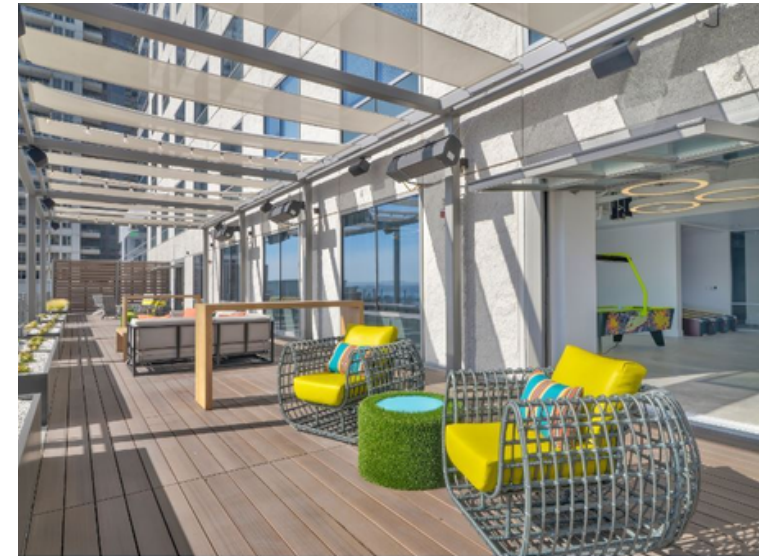
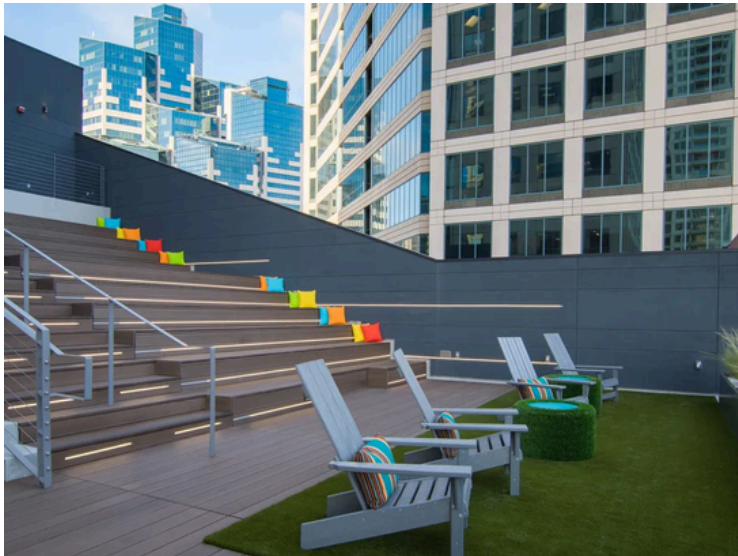
VENUE INFORMATION

The City of Coronado designed the Nautilus Banquet Room and Meeting Rooms in the Community Center as places for the community to host events, meetings, and training sessions. The largest space, the Nautilus Room, boasts exposed beam ceilings, ambient lighting, and panoramic views of Glorietta Bay, the Coronado Golf Course, and the iconic San Diego Coronado Bridge, adding a touch of elegance and charm to any occasion.

LOCATION	CAPACITY	BTS BAR SERVICES
Coronado	300 Reception 250 Seated	Yes

DECK655

655 W Broadway, San Diego, CA 92101



VENUE INFORMATION

Located on the edge of downtown San Diego, Deck655 is a versatile venue, perfect for social and corporate gatherings. Offering stunning bay views and 8,500 square feet of modern indoor and outdoor space, Deck655 includes a large indoor game room, outdoor amphitheater-style seating, and 50/50 doors that open to a 125' promenade deck. This venue provides a sophisticated atmosphere with its sleek, contemporary design and generous amenities, all of which are sure to leave a lasting impression on your guests.

LOCATION	CAPACITY	BTS BAR SERVICES
Downtown	350 Reception 100 Seated	Yes

FOUND STUDIO

5490 La Jolla Blvd, La Jolla, CA 92037



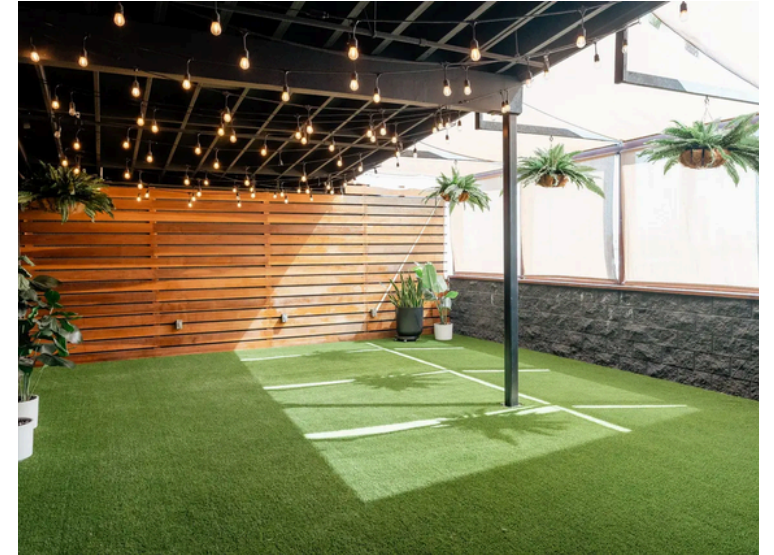
VENUE INFORMATION

Found Studio is a sophisticated, design-forward event venue located in Bird Rock, offering an open-concept layout spanning 1,800 square feet. This versatile and elegantly crafted space is perfect for private rentals, accommodating all your future events. Approachable yet refined, Found Studio brings a fresh perspective to La Jolla's coastal scene.

LOCATION	CAPACITY	BTS BAR SERVICES
La Jolla	66 Interior 144 Exterior/All Areas	Yes

JULEP

1735 Hancock St, San Diego, CA, 92101



VENUE INFORMATION

Located at the base of Mission Hills, JULEP stands out as one of San Diego's largest multipurpose venues, boasting pristine white walls, high gabled ceilings, industrial pendent lights, and more than 12,000 square feet of indoor-outdoor event areas. JULEP offers many amenities including guest seating, bistro lighting, a beautiful built-in bar, custom room dividers, and convenient on-site guest parking. With JULEP, you can expect maximum flexibility to customize this space to fit all your event needs.

LOCATION	CAPACITY	BTS BAR SERVICES
Mission Hills	750 Reception 450 Seated	No

LA JOLLA BRIDGE CLUB

1160 Coast Boulevard, La Jolla, CA 92037



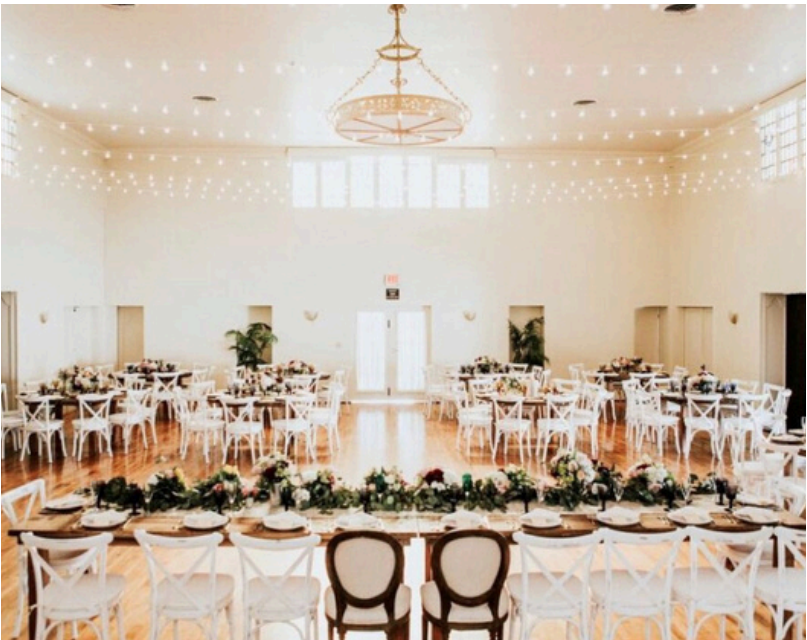
VENUE INFORMATION

The La Jolla Bridge Club is a historic building perched directly on the renowned La Jolla Cove with lovely grounds, fine amenities and unobstructed views of the Pacific Ocean. This is truly one of Southern California's most beautiful coastlines. The facilities accommodate up to 175 guests with dining available both inside as well as on the picturesque lawn area.

LOCATION	CAPACITY	BTS BAR SERVICES
La Jolla	200 Reception 175 Seated	Yes

LA JOLLA WOMAN'S CLUB

1155 Coast Boulevard, La Jolla, CA 92037



VENUE INFORMATION

La Jolla Woman's Club is located in the heart of La Jolla Village, just one block from the ocean. With its beautiful private garden, historical status, and close proximity to the shore, the club is a magical setting for any special occasion. Featuring an equal balance of interior to exterior spaces, this venue provides a wide range of layout options, making no two events the same.

LOCATION	CAPACITY	BTS BAR SERVICES
La Jolla	200 Reception 200 Seated	Yes

LIBERTY STATION CONFERENCE CENTER

2600 Laning Road, San Diego, CA 92106



VENUE INFORMATION

Liberty Station Conference Center provides over 7,700 square feet of event space, including a Main Hall and 8 breakout rooms ranging from 690 to 1,380 square feet. Its professional atmosphere makes it an ideal choice for conferences, large meetings, seminars, education trainings, and more, catering to both public and private groups. With amenities such as guest seating, AV packages, and a stage, Liberty Station Conference Center combines convenience with high-quality facilities, making it an excellent venue for a variety of events.

LOCATION	CAPACITY	BTS BAR SERVICES
Point Loma	450 Reception 350 Seated	Yes

LUCE KETTNER

2310 Kettner Boulevard, Suite A, San Diego, CA 92101



VENUE INFORMATION

In San Diego's vibrant Little Italy district stands LUCE Kettner, a stunning open-concept warehouse featuring versatile event spaces across an impressive 7,250 square feet. With its exposed brick walls, a high-arched wood ceiling, towering iron-framed doors, inviting market lighting, and a spacious open floor plan, this venue is ideal for vibrant morning events, lively afternoon gatherings, intimate evening soirées, and everything in between. Renovated with a modern touch, the space exudes sophistication while maintaining the industrial charm of an urban, boho setting.

LOCATION	CAPACITY	BTS BAR SERVICES
Downtown	300 Reception 250 Seated	Yes

LUCE LOFT

1037 J Street, San Diego, CA 92101



VENUE INFORMATION

Luce Loft is a beautiful, raw, urban venue located in Downtown San Diego, just blocks from the Gaslamp District and housed within the historic 1928 Carnation Dairy Building. With 4,000 square feet of space, it boasts remarkable architectural features including a high arched barrel ceiling, stained concrete floors, expansive windows, a custom chevron wooden door, a chic loft staircase, and charming market lighting. Luce Loft also offers plenty of amenities such as a furnished bridal suite, 4 restrooms, and an in-house sound system.

LOCATION	CAPACITY	BTS BAR SERVICES
Downtown	175 Reception 140 Seated	Yes

MARTIN JOHNSON HOUSE

8840 Biological Grade, La Jolla, CA 92037



VENUE INFORMATION

The Martin Johnson House is a historic oceanfront cottage nestled under lush cypress trees with breathtaking views of the Pacific coastline. Built in 1916, it is one of the earliest additions to the Scripps Institution of Oceanography campus. This charming venue is perfect for any occasion, featuring a cozy interior room and a beautiful two-tiered deck surrounded by grassy areas with bench seating, creating an ideal coastal setting.

LOCATION	CAPACITY	BTS BAR SERVICES
La Jolla	130 Reception 130 Seated	Yes

MCAS MIRAMAR

Mitscher Way, Building #2258, San Diego, CA 92145



VENUE INFORMATION

Marine Corps Air Station Miramar and its flight line have opened their doors to the public for those interested in learning more about MCAS Miramar and Marine aviation. This versatile and expansive event space can accommodate over 2,500 guests for both receptions and seated events. Since 1991, proceeds have been reinvested into enhancing the quality of life and supporting recreational programs at the air station. Regardless of the occasion, this venue provides ample room and flexibility, ensuring a successful and memorable event.

LOCATION	CAPACITY	BTS BAR SERVICES
Miramar	2,500+ Reception 2,500+ Seated	No

NEW CENTRAL LIBRARY

330 Park Blvd, San Diego, CA 92101



VENUE INFORMATION

Just minutes away from the historic Gaslamp Quarter, this acclaimed library and architectural wonder serves as the perfect setting for gatherings of any kind. Since opening its doors in 2013, the venue has emerged as one of the city's most beloved cultural institutions, lauded for its exceptional amenities, striking design, cozy ambiance, and lively event areas bathed in natural light. The San Diego Central Library boasts three rentable spaces, including the Neil Morgan Auditorium, Shiley Special Events Suite, and the Mary Hollis Clark Conference Center, ideal for all your event aspirations.

LOCATION	CAPACITY	BTS BAR SERVICES
Downtown	500 Reception 300 Seated	Yes

ORLI LA JOLLA

7753 Draper Ave, La Jolla, CA 92037



VENUE INFORMATION

Experience the fusion of deco and modernism design at the reimagined 1910-era landmark building in the seaside village of La Jolla. With dynamic spaces, an inspiring design, and fresh ocean air, Orli offers a relaxed, energizing environment creating the perfect setting for your next event.*

*Venue spaces are exclusive to Orli guests with a minimum stay of two nights.

LOCATION	CAPACITY	BTS BAR SERVICES
La Jolla	65 Reception 35 Seated	Yes

RANCHO GUEJITO

17224 San Pasqual Valley Road, Escondido, CA 92027



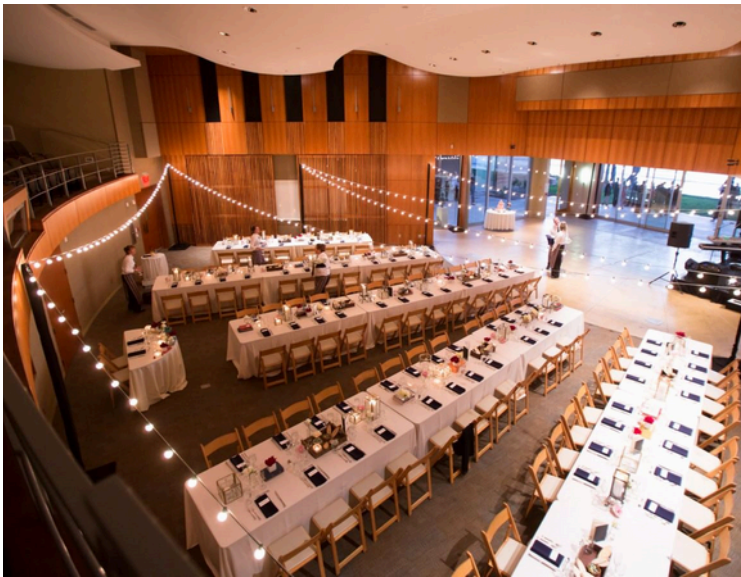
VENUE INFORMATION

Rancho Guejito is a timeless wedding venue nestled in the center of Escondido. The lush vineyards and airy courtyard combine to form an ideal venue for any event. It features the beautiful and historic Rockwood House, originally constructed in the 1880's, that overlooks the 23,000 acres of Rancho Guejito's estate. The vast groves that surround the farmhouse provide an enchanting outdoor area encompassed by vines, greenery, and trees, complementing the locale's intimate ambiance and creating a truly enchanting backdrop for your next event.

LOCATION	CAPACITY	BTS BAR SERVICES
Escondido	300 Reception 200 Seated	Yes

ROBERT PAINE SCRIPPS FORUM

8610 Kennel Way, La Jolla, CA 92037



VENUE INFORMATION

The Robert Paine Scripps Forum stands out as a stunning venue for any occasion. With its modern and inviting design, this venue showcases award-winning architecture and a seamless interior layout. From its floor to ceiling glass windows to its rich wood exterior, every detail has been carefully considered. Featuring a versatile auditorium with a balcony, four individual ocean-view conference rooms, breakout spaces, an outdoor garden plaza, tiled veranda, and direct access to sandy shores, this venue radiates a refined coastal elegance and sophistication that caters to all your event requirements.

LOCATION	CAPACITY	BTS BAR SERVICES
La Jolla	330 Reception 200 Seated	No

THE CONRAD

7600 Fay Avenue, La Jolla, CA 92037



VENUE INFORMATION

The Conrad is the state-of-the-art home for arts and culture in San Diego. It's the permanent home of La Jolla Music Society and hosts world-class performances presented by LJMS and other local arts organizations. Boasting technologically advanced acoustics and architecture inspired by the surrounding coastal community, the 49,000 square foot facility includes multiple concert halls, a 2,000 square foot flexible performance space, a reception/meeting room, comfortable artist spaces, an open courtyard and a beautiful terrace, making the Conrad an inviting location for any event.

LOCATION	CAPACITY	BTS BAR SERVICES
La Jolla	513 Reception 513 Seated	No

THE SOAP FACTORY

2995 Commercial St, San Diego, CA 92113



VENUE INFORMATION

The Soap Factory, located just outside the heart of San Diego, stands as the city's largest indoor-outdoor event center. With its artistic charm and eclectic appeal, the property includes modern urban amenities, lush landscaping, large open spaces, and intimate gathering areas—each contributing to the unique character of The Soap Factory.

LOCATION	CAPACITY	BTS BAR SERVICES
Logan Heights	Up to 375 for Reception Up to 250 for Seated Up to 1,500 for Festival Use	No

UC SAN DIEGO PARK & MARKET

1100 Market Street, San Diego, CA 92101



VENUE INFORMATION

UC San Diego Park & Market is an experience unlike any other. With four levels of spectacular cityscape views and state of the art technology, Park & Market will elevate any event with its modern and unique features. With a variety of spaces to configure an unforgettable event, Park & Market is the ideal venue to host galas, concerts, lectures, meetings, and more.

LOCATION	CAPACITY	BTS BAR SERVICES
Downtown	300 Reception 175+ Seated	Yes

THE ULTIMATE SKY BOX AT DIAMONDVIEW TOWER

350 10th Avenue, San Diego, CA 92101



VENUE INFORMATION

Located on the top floor of the upscale Diamond View Tower in East Village, The Ultimate Skybox is the “ultimate” venue space that spans an impressive 4,500 square feet. With breathtaking views of the San Diego skyline, as well as direct views into Petco Park Stadium, this venue sets the stage for a memorable event. Featuring a contemporary design, ample amenities, and a touch of sophistication, The Ultimate Skybox is perfect for any occasion.

LOCATION	CAPACITY	BTS BAR SERVICES
Downtown	500+ Reception 500+ Seated	Yes

ADDITIONAL VENUES THAT WE ARE PROUD TO PARTNER WITH

CENTRAL SAN DIEGO

Adams Avenue Theater
Brick
Chula Vista Elite Athlete Training Center
City of San Diego Parks & Beaches
Comic-Con Museum
Embarcadero
Flora
Liberty Station Outdoor Promenades
Mission Brewery
Olivewood Gardens & Learning Center
Piazza de la Familia
Port Pavilion
San Diego Air & Space Museum
San Diego Automotive Museum
The Natural History Museum
The Point
Tower Beach Club & Showroom
Waterfront Park

NORTH COUNTY

AleSmith Brewery
Carlsbad Flower Fields
Milagro Winery
River Garden
Secret Garden at Rancho Santa Fe
TERI Campus of Life
The Vistonian
The Woodshed

EAST COUNTY

Allen Airways Flying Museum
Lions Tigers & Bears

CONCERT VENUES

California Center for the Arts, Escondido
North Island Credit Union Amphitheater
Pachenga Arena
Petco Park
Rady Shell at Jacobs Park
Snapdragon Stadium
The Magnolia
The North Park Observatory